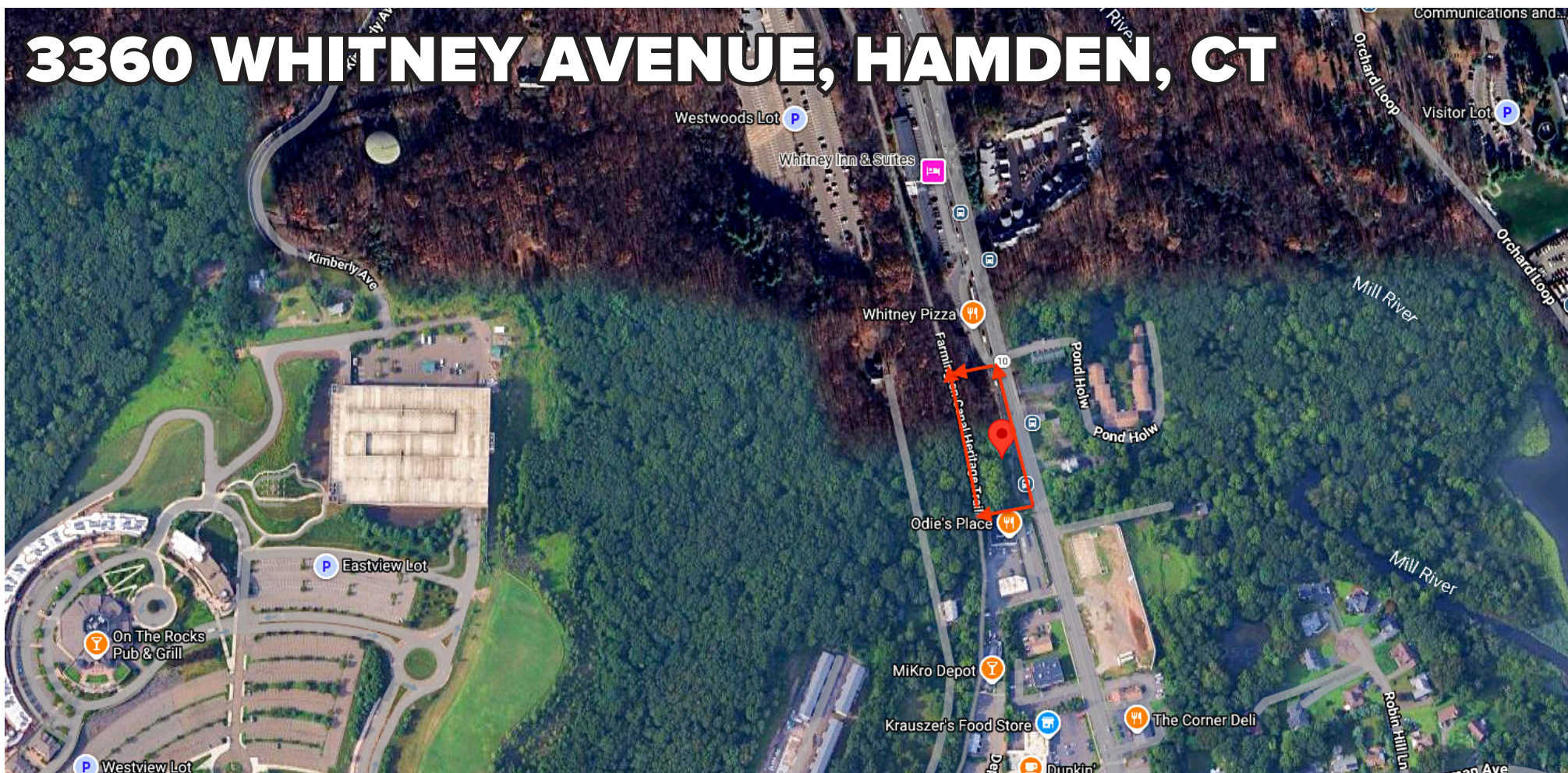


3360 WHITNEY AVENUE, HAMDEN, CT



AVAILABLE FOR GROUND LEASE: .76 ACRE

- » This amazing opportunity is fully approved to build up to 4000 SF.
- » Parking for 30 cars with drive-through.
- » Strategically located on the most desirable section of Whitney Avenue.
- » Perfect for banks, QSR, coffee and retail with 365 feet of frontage!

DEMOGRAPHICS

	1-Mile	3-Miles	5-Miles
Population	3,598	30,762	79,131
Number of Household	1,348	10,561	26,740
Avg. Household Income	\$139,390	\$123,723	\$108,505

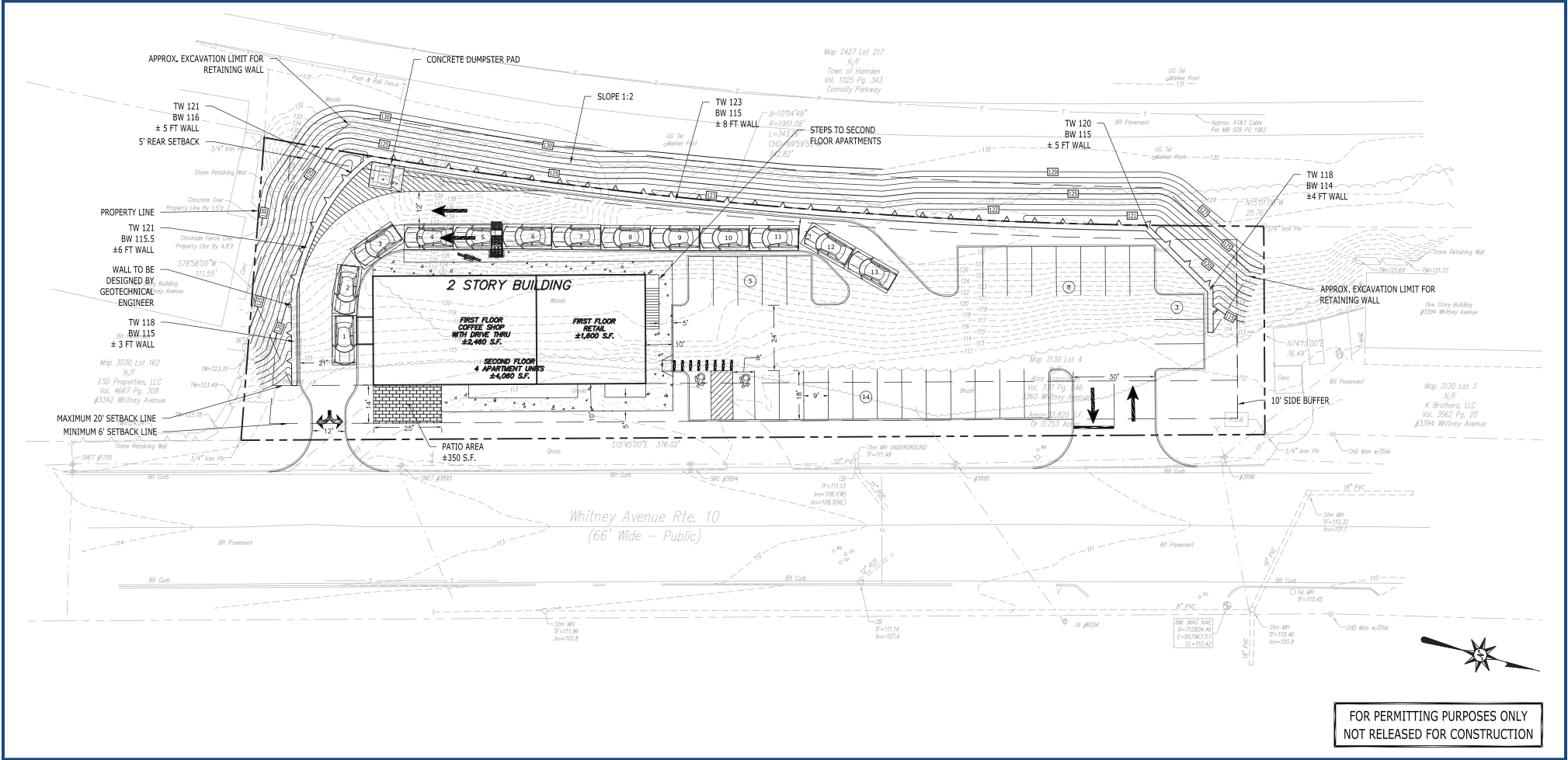
22,000± VPD

A TRUE EXCLUSIVE...
CALL FOR THE
DETAILS!

AGENT:
RICHARD SCHNIDER
203.762.6173
rs@truecre.com

This information provided in this marketing package has been obtained from sources believed reliable, but has not been verified for accuracy or completeness. You should conduct a careful, independent investigation of the property and verify all information. Any reliance on this information is solely at your own risk.





3360 WHITNEY AVENUE, HAMDEN, CT



SITE