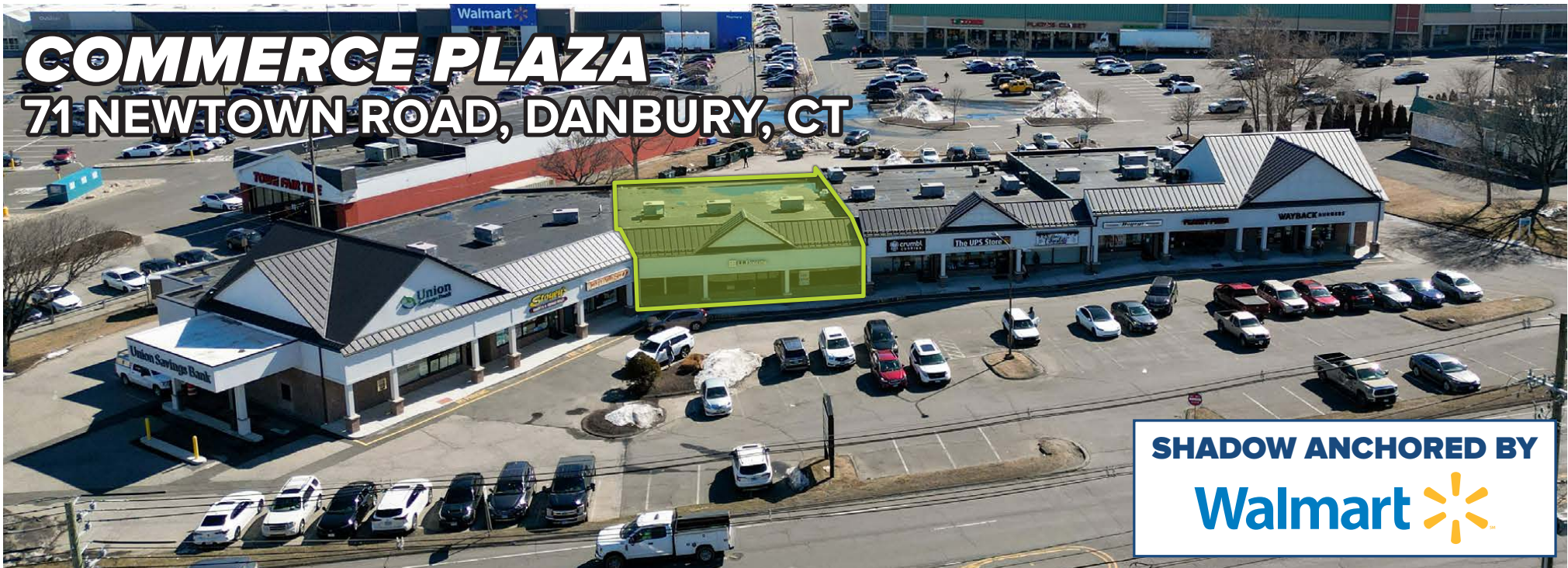


COMMERCE PLAZA

71 NEWTOWN ROAD, DANBURY, CT



SHADOW ANCHORED BY
Walmart 

FOR LEASE: 5,380 SF

RETAIL STRIP SHOPPING CENTER

- » Great location on Newtown Road
- » High traffic shopping center with strong convenience-oriented co-tenants
- » Ample parking for customers

CO-TENANTS:











JACKY'S
NAILS

AND
MANY
MORE!

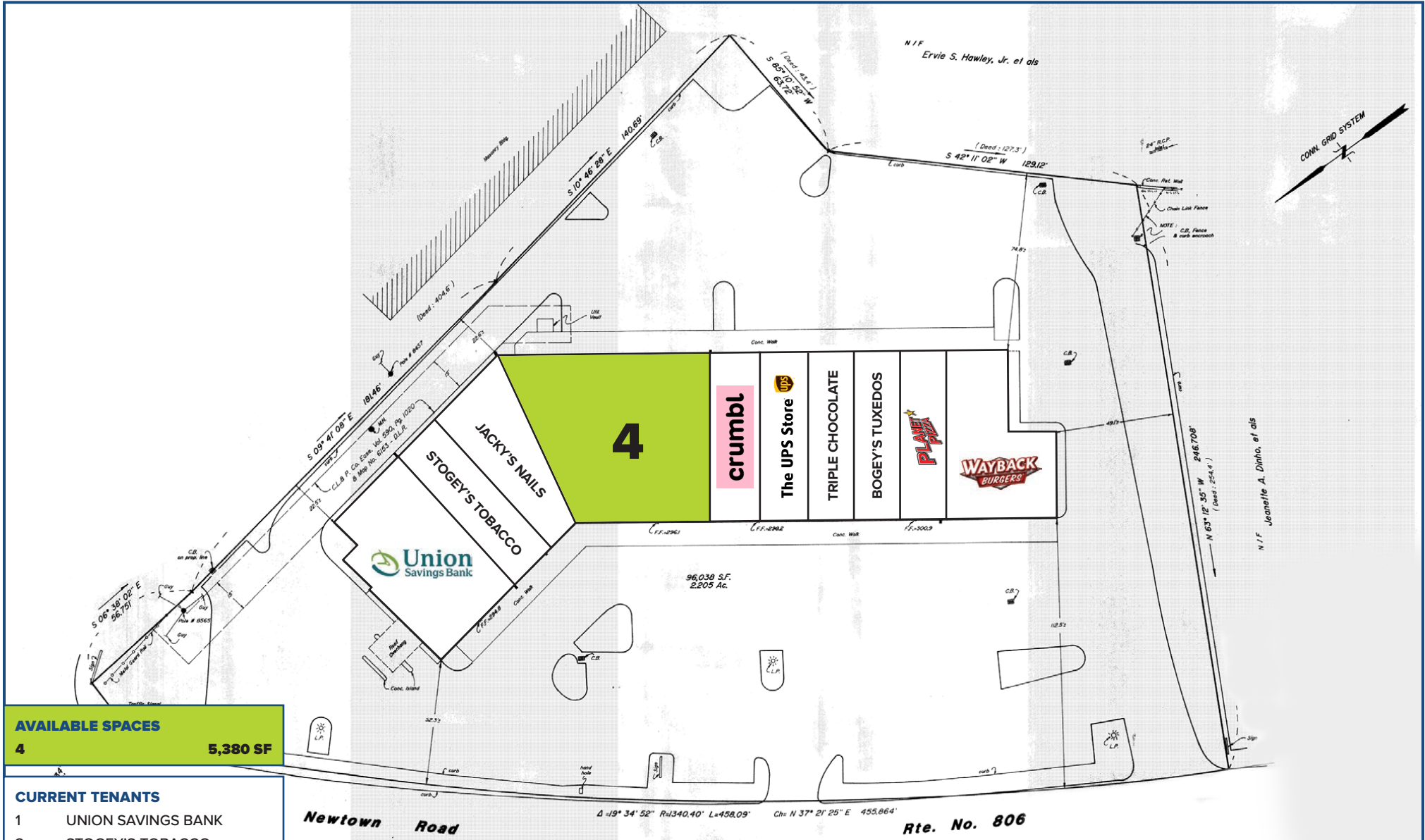
DEMOGRAPHICS			
	1-Mile	3-Miles	5-Miles
Population	5,687	76,092	116,482
Number of Household	2,203	29,417	44,033
Avg. Household Income	\$129,068	\$122,680	\$134,952
33,000 VPD			

A TRUE EXCLUSIVE...
**CALL FOR THE
 DETAILS!**

AGENTS:
DOMINICK MUSILLI | **RICHARD SCHNIDER**
 203.529.4629 | 203.762.6173
 dm@truecre.com | rs@truecre.com

This information provided in this marketing package has been obtained from sources believed reliable, but has not been verified for accuracy or completeness. You should conduct a careful, independent investigation of the property and verify all information. Any reliance on this information is solely at your own risk.



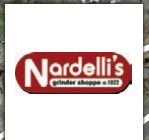


AVAILABLE SPACES
4 **5,380 SF**

- CURRENT TENANTS**
- 1 UNION SAVINGS BANK
 - 2 STOGEY'S TOBACCO
 - 3 JACKY'S NAILS
 - 5 CRUMBL COOKIES
 - 6 UPS STORE
 - 7 TRIPLE CHOCOLATE
 - 8 BOGEY'S TUXEDOS
 - 9 PLANET PIZZA
 - 10 WAYBACK BURGERS

COMMERCE PLAZA
71 NEWTOWN ROAD, DANBURY, CT

94,500 VPD



OFF-RAMP
EXIT 8



NUTMEG SQUARE

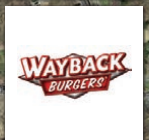


NEWTOWN ROAD 133,000 VPD

COMMERCE PLAZA



BERKSHIRE SHOPPING CENTER



PLUMTREES PLAZA

