

# PLUMTREES PLAZA

## 61 NEWTOWN ROAD, DANBURY, CT



# FOR LEASE: 3,250 SF & 4,574 SF

FORMER  
RESTAURANT SPACE

## RETAIL STRIP SHOPPING CENTER

- » Grocery anchored center at a heavily trafficked corner
- » Ample parking
- » In the heart of one of Danbury's best retail corridor

### CO-TENANTS:



GREEN  
WINE &  
LIQUORS

IVES BANK

AND  
MANY MORE!

DEMOGRAPHICS	1-MILE	3-MILES	5-MILES
POPULATION	5,687	76,092	116,482
NUMBER OF HH	2,203	29,417	44,033
AVG. HH INCOME	\$129,068	\$122,680	\$134,952

33,000 VPD

**A TRUE EXCLUSIVE...**  
**CALL FOR THE  
DETAILS!**

**AGENTS:**  
**DOMINICK MUSILLI**  
203.529.4629  
dm@truecre.com

**RICHARD SCHNIDER**  
203.762.6173  
rs@truecre.com

This information provided in this marketing package has been obtained from sources believed reliable, but has not been verified for accuracy or completeness. You should conduct a careful, independent investigation of the property and verify all information. Any reliance on this information is solely at your own risk.





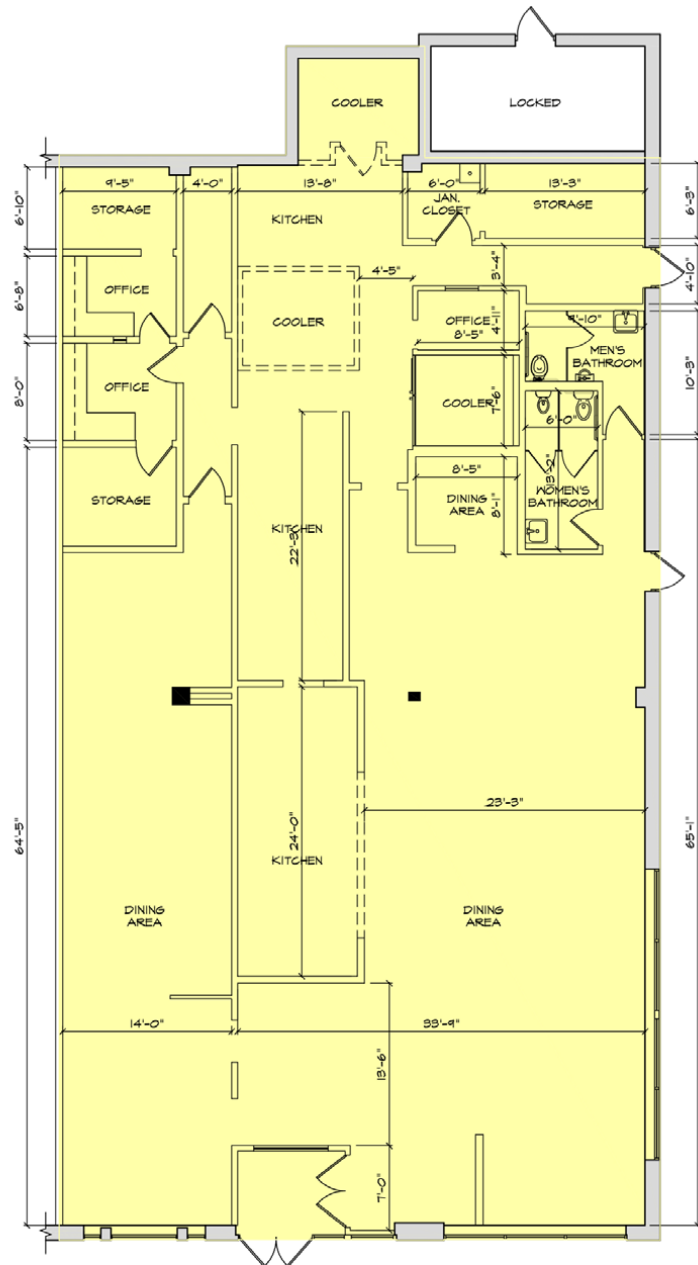
**AVAILABLE SPACES**

2A	3,250 SF
15	4,574 SF

**CURRENT TENANTS**

1	SHAH'S HALAL
2B	THE ONE NAIL SALON
3	ASIAN FUSION RESTAURANT (COMING SOON)
4-5	GREEN WINE & LIQUORS
6-12	ALDI SUPERMARKET
13	ARMED FORCES RECRUITMENT CENTER
14	DOLLAR TREE
16	IVES BANK

**4,574 SF**



TOTAL SQUARE  
FOOTAGE:  
4,574 USF

**(A) EXISTING CONDITIONS WITH SQ. FT. PLAN**  
SCALE: 1/8"=1'-0"



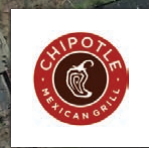
PLUMTREES PLAZA  
61 NEWTOWN ROAD, DANBURY, CT

94,500 VPD



OFF-RAMP

EXIT 8



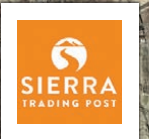
NUTMEG SQUARE



COMMERCE PLAZA



BERKSHIRE SHOPPING CENTER



PLUMTREES PLAZA

