

292 BOSTON POST ROAD, ORANGE, CT



FOR LEASE: 1,895 SF - 12,927 SF

- » High visibility end-cap with excellent frontage on one of Connecticut's dominant retail corridors!
- » Dedicated pylon!

FORMER PARTY CITY

AREA RETAILERS:



AND MANY MORE!

DEMOGRAPHICS

	3-Miles	5-Miles	10-Miles
Population	8,150	71,927	187,622
Number of Household	3,133	27,254	71,294
Avg. Household Income	\$73,995	\$95,257	\$95,890

A TRUE EXCLUSIVE...
CALL FOR THE DETAILS!

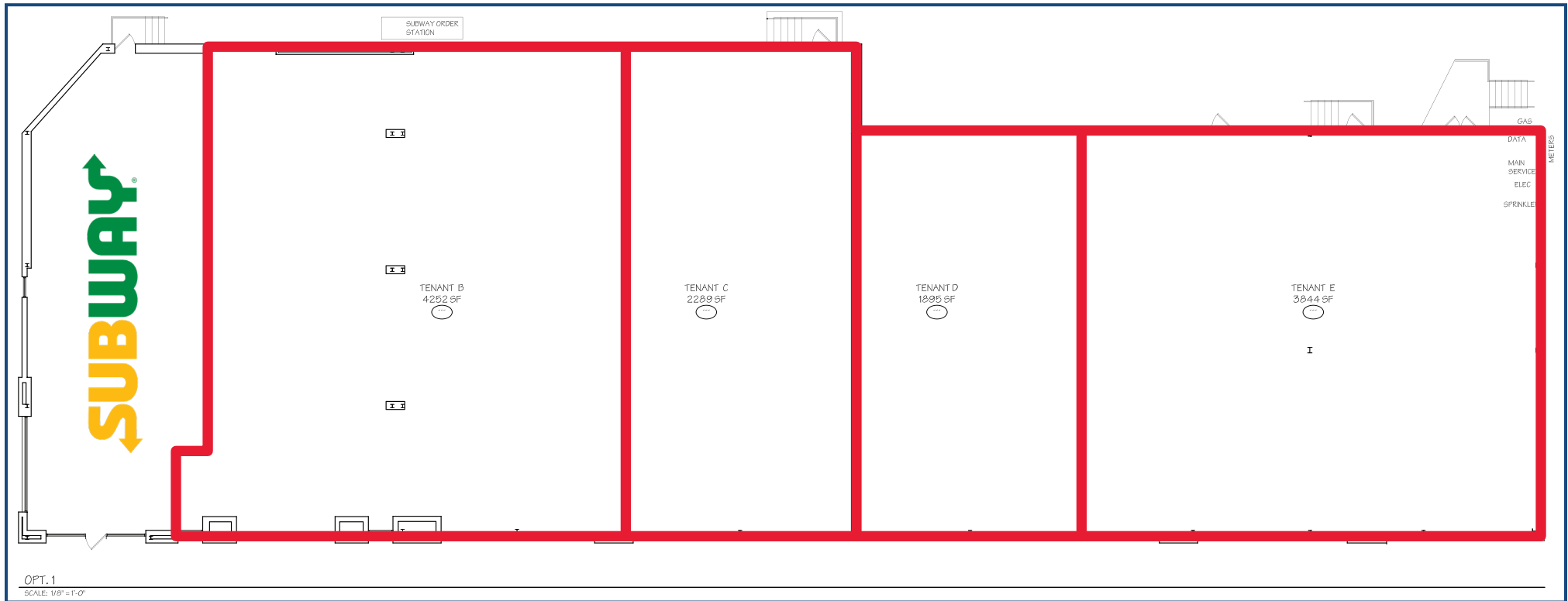
AGENTS:
TYLER LYMAN
203.529.4639
tl@truecre.com

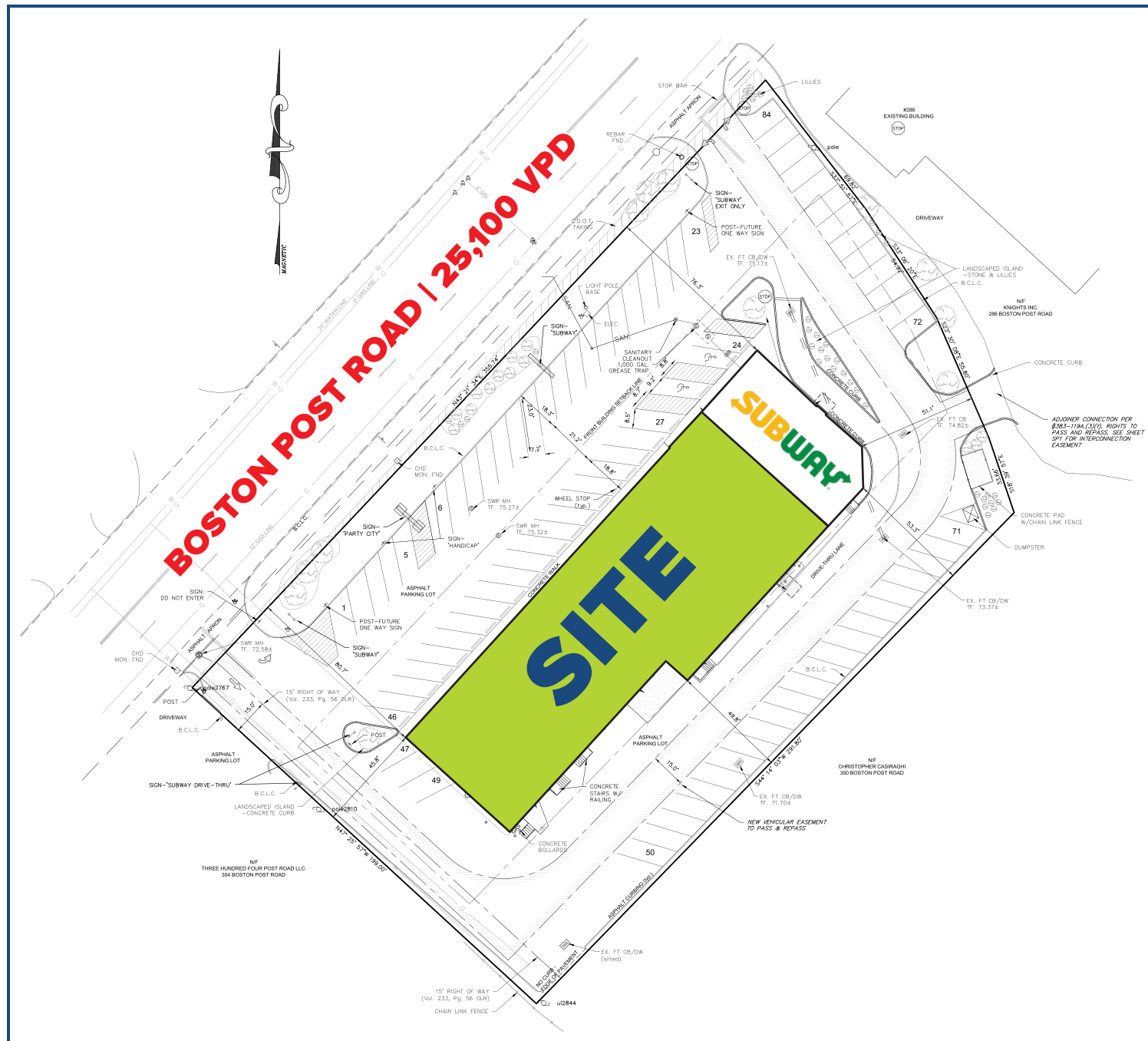
WES CRAFT
203.522.7484
wc@truecre.com

This information provided in this marketing package has been obtained from sources believed reliable, but has not been verified for accuracy or completeness. You should conduct a careful, independent investigation of the property and verify all information. Any reliance on this information is solely at your own risk.



POTENTIAL SUBDIVISION PLAN





292 BOSTON POST ROAD, ORANGE, CT



ORANGE PLAZA



MILFORD MARKETPLACE



TURNPIKE SQUARE



MILFORD PLAZA



MILFORD CROSSING



CONNECTICUT POST MALL

