

17 HIGH RIDGE ROAD STAMFORD, CT



FOR LEASE: 1,430 SF & 1,420 SF

Great visibility at the busiest intersection in Stamford (Bulls Head)

+ 871 SF BASEMENT



DEMOGRAPHICS	1-MILE	3-MILES	5-MILES
POPULATION	19,130	143,370	190,691
NUMBER OF HH	8,500	57,470	74,225
AVG. HH INCOME	\$167,875	\$184,140	\$245,530

AREA RETAILERS:



TYLER LYMAN
203.529.4639
tl@truecre.com

WES CRAFT
203.522.7484
wc@truecre.com

2228 Black Rock Turnpike, Suite 206, Fairfield, CT 06825
203.744.7777
www.truecre.com

This information provided in this marketing package has been obtained from sources believed reliable, but has not been verified for accuracy or completeness. You should conduct a careful, independent investigation of the property and verify all information. Any reliance on this information is solely at your own risk.

17 HIGH RIDGE ROAD, STAMFORD, CT

Saks OFF 5TH

WHOLE FOODS MARKET

COAL HOUSE
EST. 2009

Hawley Lane SHOES

ups
The UPS Store

CVS pharmacy

DIG.

HomeGoods

Starbucks

THE ORIGINAL **FRANK PEPE**
PIZZERIA NAPOLETANA
EST. 1925

SHAKE SHACK

T-Mobile

MY SALON

Bank of America

DUNKIN'

SITE

pure barre

UNITED STATES POSTAL SERVICE

GOLD SPRING RD | 18,000 VPD

LONG RIDGE RD | 13,500 VPD

GOLD SPRING RD | 12,200 VPD

LONG RIDGE RD | 8,700 VPD

HIGH RIDGE RD | 42,100 VPD

20,200 VPD

BEDFORD ST | 10,900 VPD

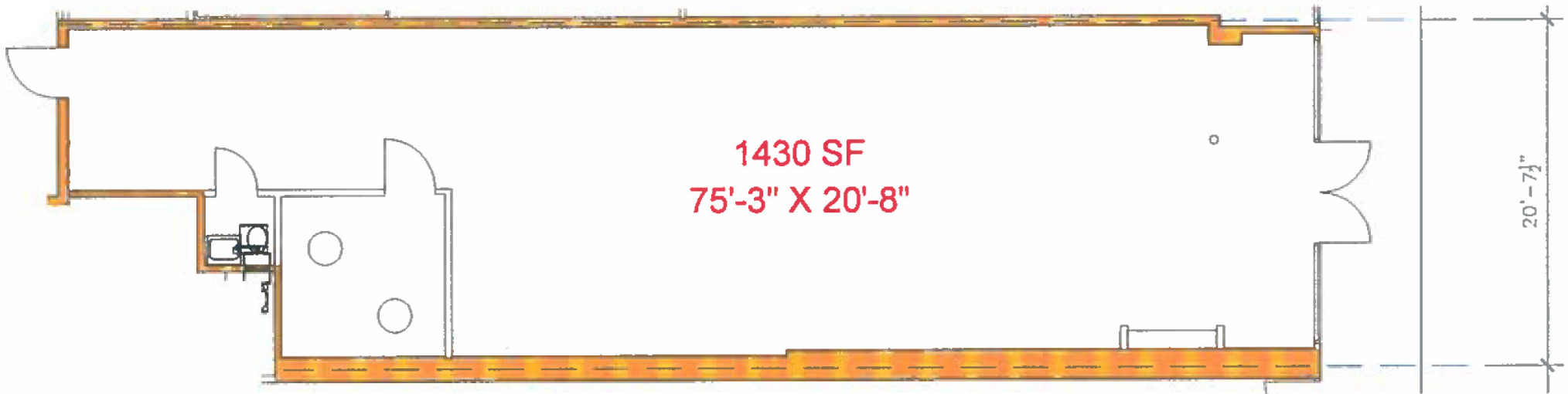
BEDFORD STREET

SUMMER ST

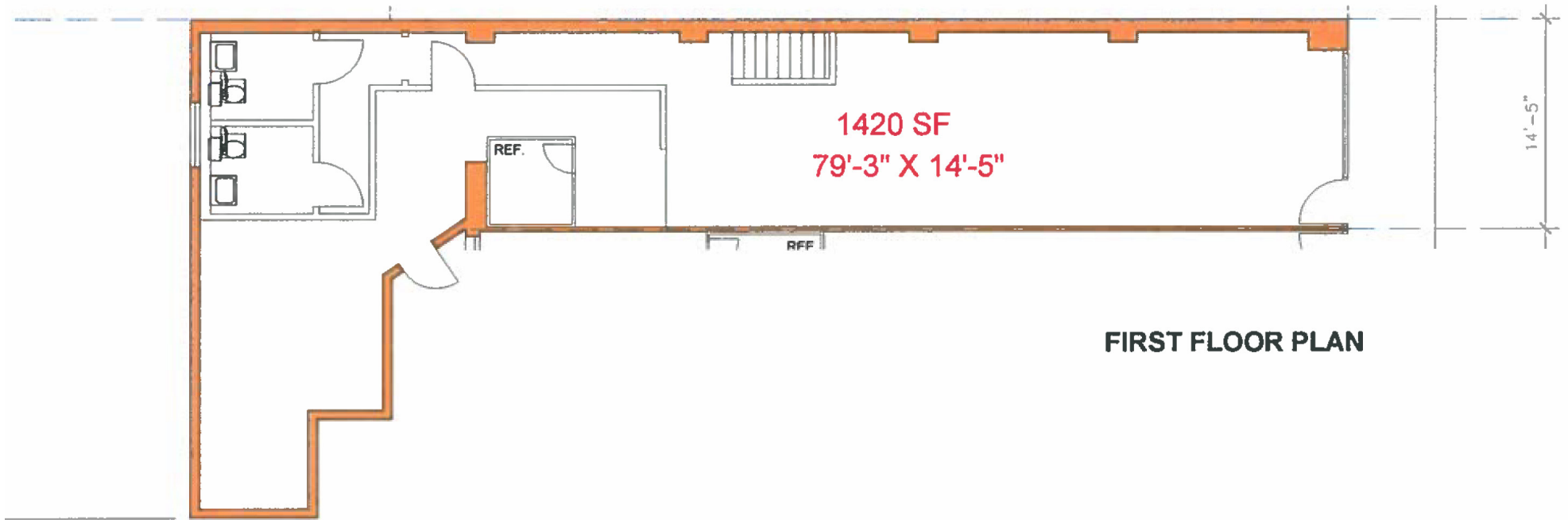
ofc
URGENT CARE
american family care

First County Bank
It's where you belong.

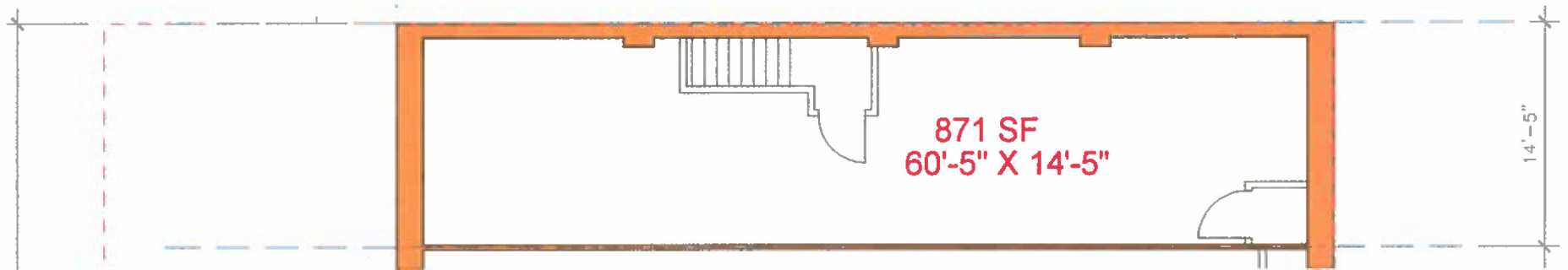
TRUE
COMMERCIAL REAL ESTATE LLC



FIRST FLOOR PLAN



FIRST FLOOR PLAN



CELLAR PLAN

CELLAR	871 SF
FIRST FLOOR	1,420 SF
TOTAL	2,291 SF