

# 188 POST ROAD WEST, WESTPORT, CT



## FOR LEASE: GROUND FLOOR: 2,689 SF + 339 SF MEZZANINE

- » Freestanding building on Post Road
- » Located at the intersection of Post Road and Kings Highway
- » Pylon/Signage available
- » 16 dedicated parkings stalls on site

### DEMOGRAPHICS

	1-Mile	3-Miles	5-Miles
Population	5,618	43,460	126,201
No. of Household	2,074	16,189	48,892
Avg. Household Income	\$376,270	\$315,123	\$236,107

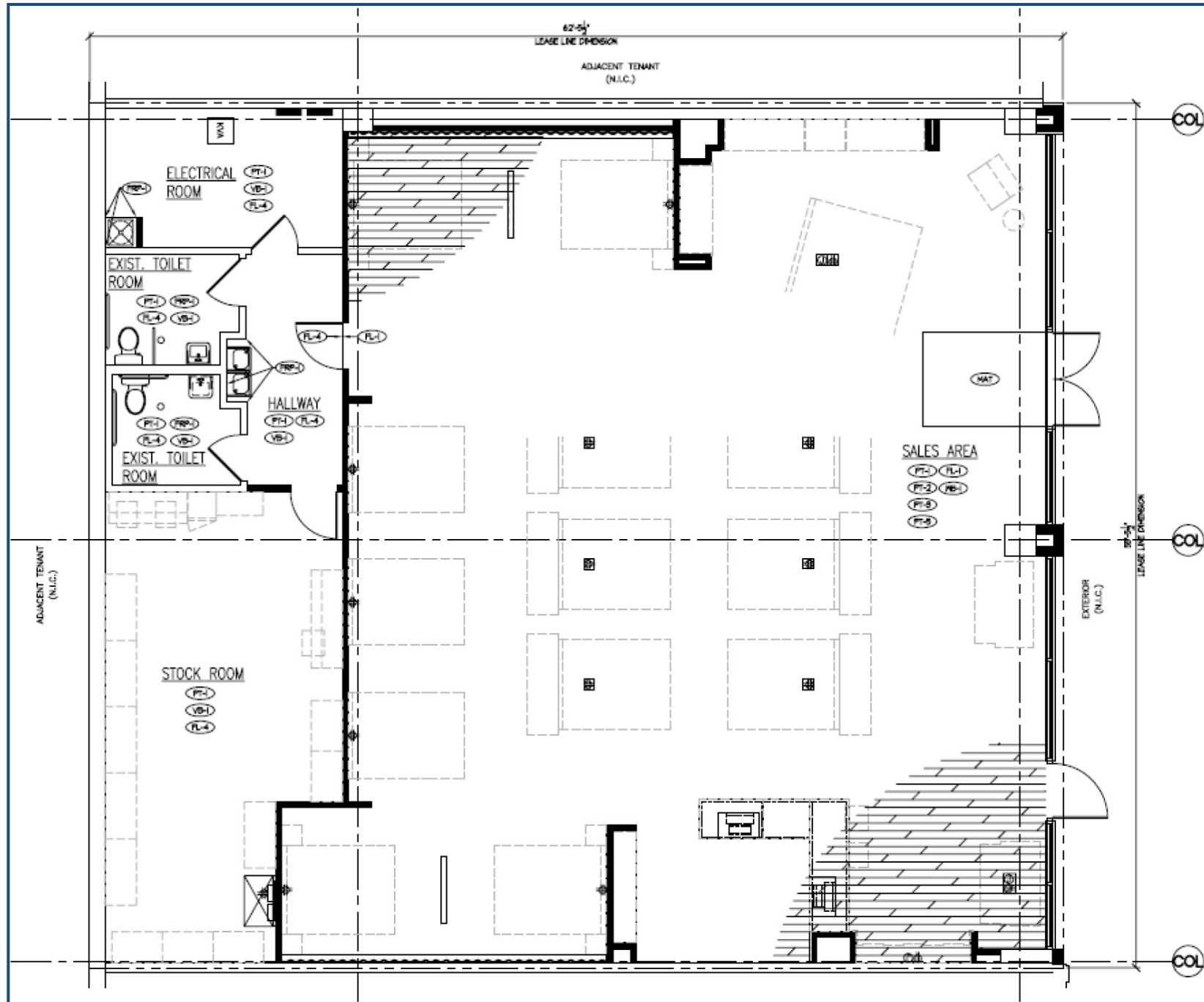
**A TRUE EXCLUSIVE...**  
**CALL FOR THE  
DETAILS!**

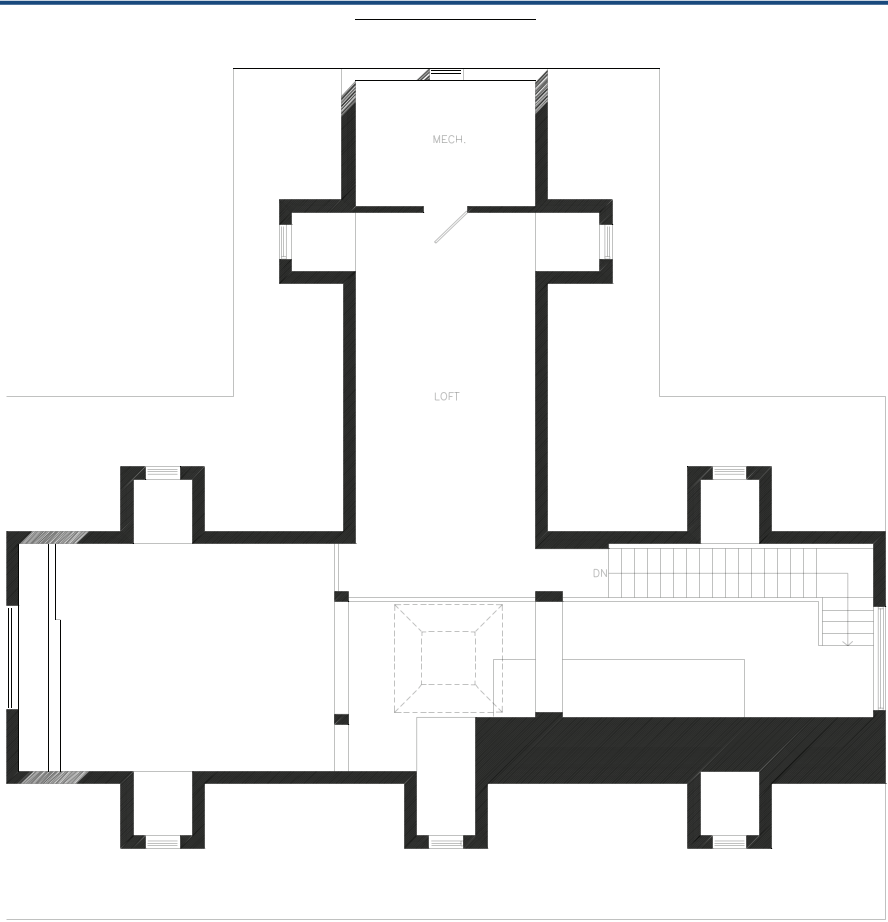
**AGENTS:**  
**TYLER LYMAN**  
203.529.4639  
tl@truecre.com

**WES CRAFT**  
203.522.7484  
wc@truecre.com

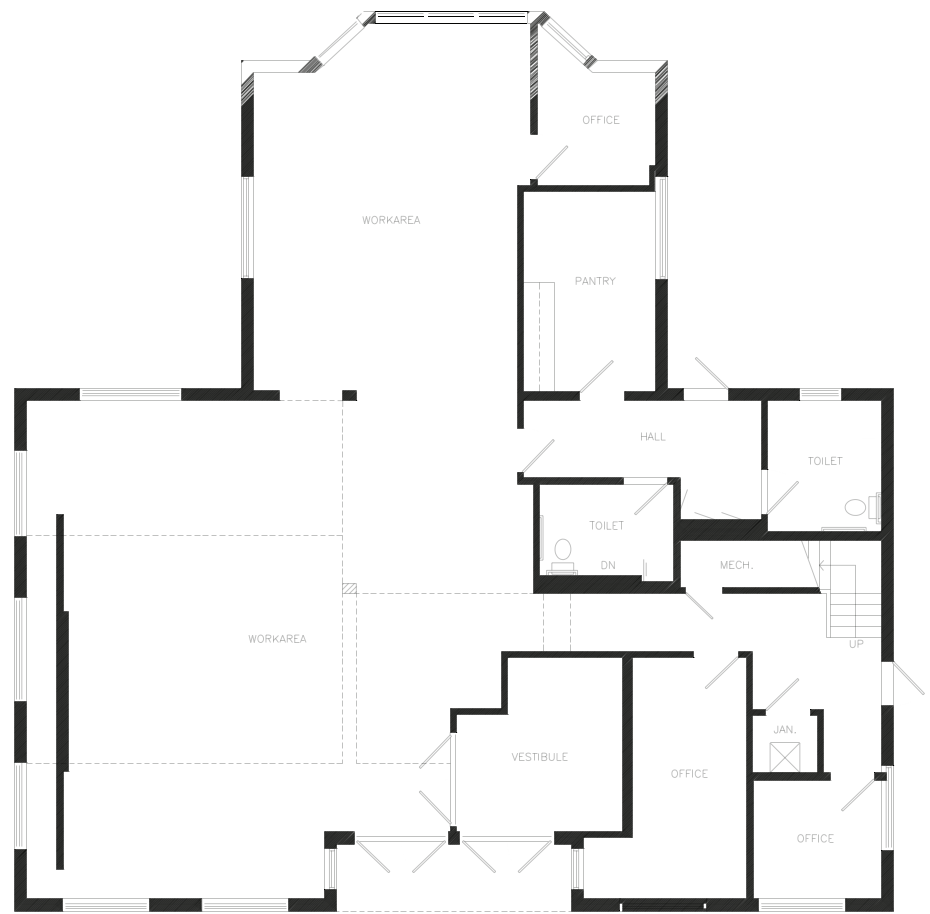
This information provided in this marketing package has been obtained from sources believed reliable, but has not been verified for accuracy or completeness. You should conduct a careful, independent investigation of the property and verify all information. Any reliance on this information is solely at your own risk.







0 2 5 10  
ATTIC LOFT PLAN  
339 SF



0 2 5 10  
FIRST FLOOR PLAN  
2,689 SF




*terrain*


**CVS**

**SITE**

POST-ROAD-WEST

--	--

--	--

--	--



--	--



--	--	--