



TRUE
COMMERCIAL REAL ESTATE LLC

940 QUAKER LANE SOUTH | WEST HARTFORD, CT

DEMOGRAPHICS

POPULATION

1 mile: 11,724
3 miles: 132,743
5 miles: 278,941

HOUSEHOLDS

1 mile: 4,805
3 miles: 54,584
5 miles: 113,271

AVG. HOUSEHOLD \$

1 mile: \$112,231
3 miles: \$109,462
5 miles: \$109,326



AVAILABLE: 12,805 SF

- Outstanding corner building at a traffic signal in the heart of the Elmwood section of West Hartford.
- Excellent visibility and ample parking.
- Sub-lease available to 02/28/31

AREA RETAILERS: CVS, Frank Pepe's, Jerry's Artarama & several others.

20,900± ADT

**A TRUE EXCLUSIVE...
CALL FOR THE DETAILS!**

AGENT:

Dominick Musilli

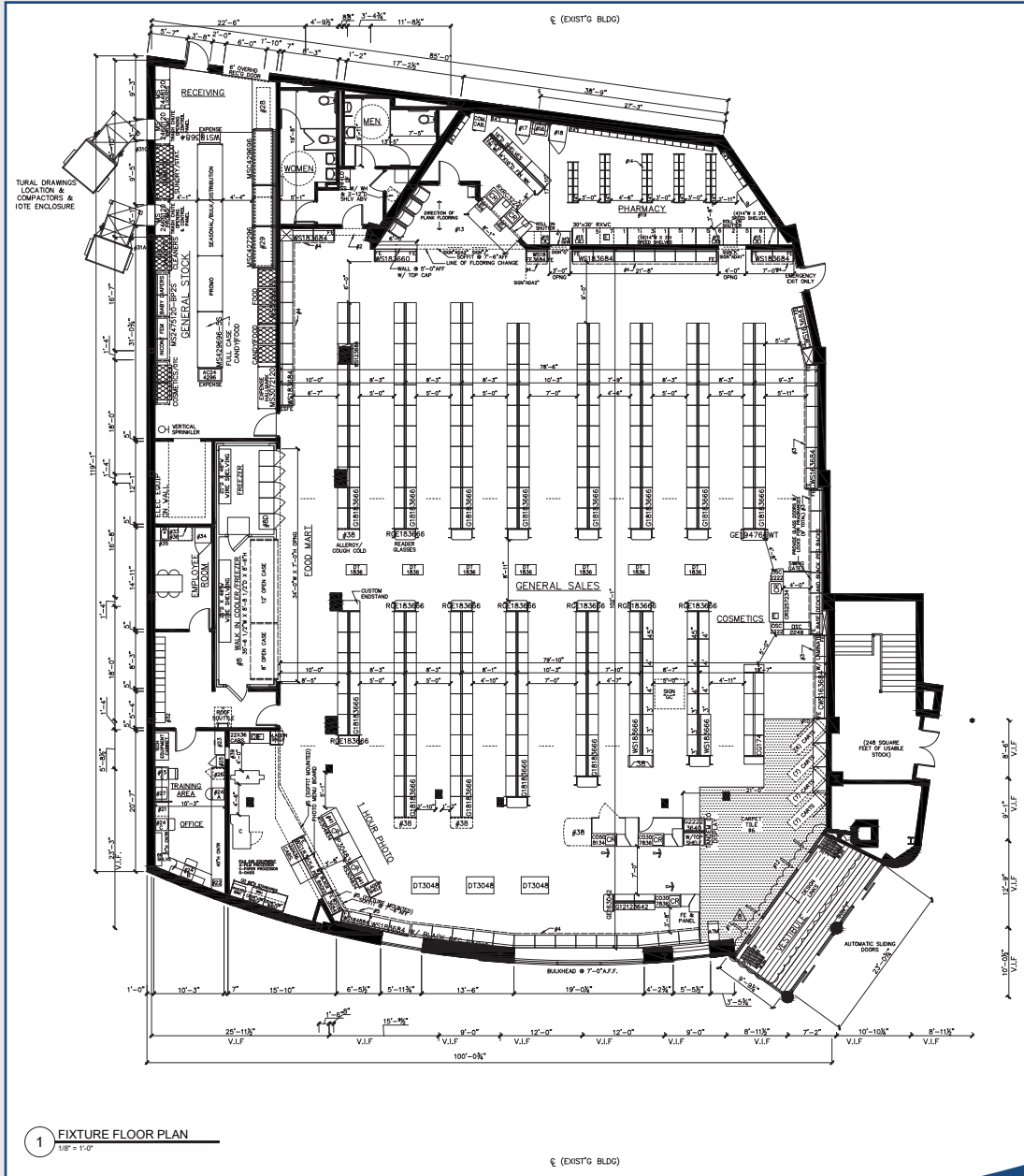
203.529.4629 | dm@truecre.com

This information provided in this marketing package has been obtained from sources believed reliable, but has not been verified for accuracy or completeness. You should conduct a careful, independent investigation of the property and verify all information. Any reliance on this information is solely at your own risk.

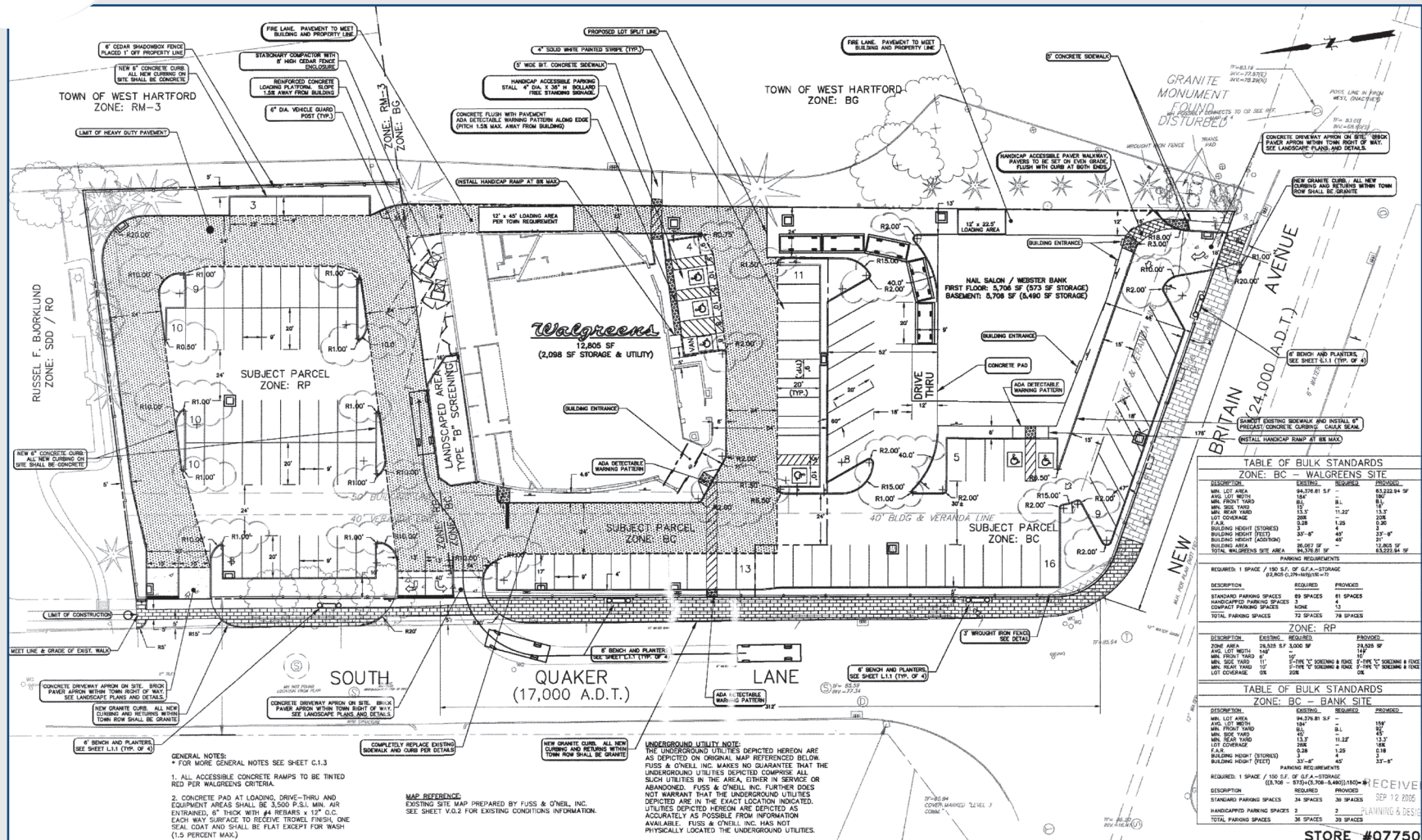




940 QUAKER LANE SOUTH | WEST HARTFORD, CT



940 QUAKER LANE SOUTH | WEST HARTFORD, CT



SITE PLAN



940 QUAKER LANE SOUTH | WEST HARTFORD, CT



QUAKER LANE S

