



2800 MAIN STREET | GLASTONBURY, CT

DEMOGRAPHICS

POPULATION

1 mile: 5,111
3 miles: 44,776
5 miles: 180,994

HOUSEHOLDS

1 mile: 2,348
3 miles: 18,980
5 miles: 72,988

AVG. HOUSEHOLD \$

1 mile: \$123,411
3 miles: \$133,198
5 miles: \$108,183



FOR LEASE OR FOR SALE: UP TO 4,517 SF

**GREAT VISIBILITY FOR RESTAURANT, RETAIL,
MEDICAL OR OFFICE!**

- Located at a traffic light on the corner of Main Street and Spring Street.
- Plentiful parking with more parking proposed.

This information provided in this marketing package has been obtained from sources believed reliable, but has not been verified for accuracy or completeness. You should conduct a careful, independent investigation of the property and verify all information. Any reliance on this information is solely at your own risk.

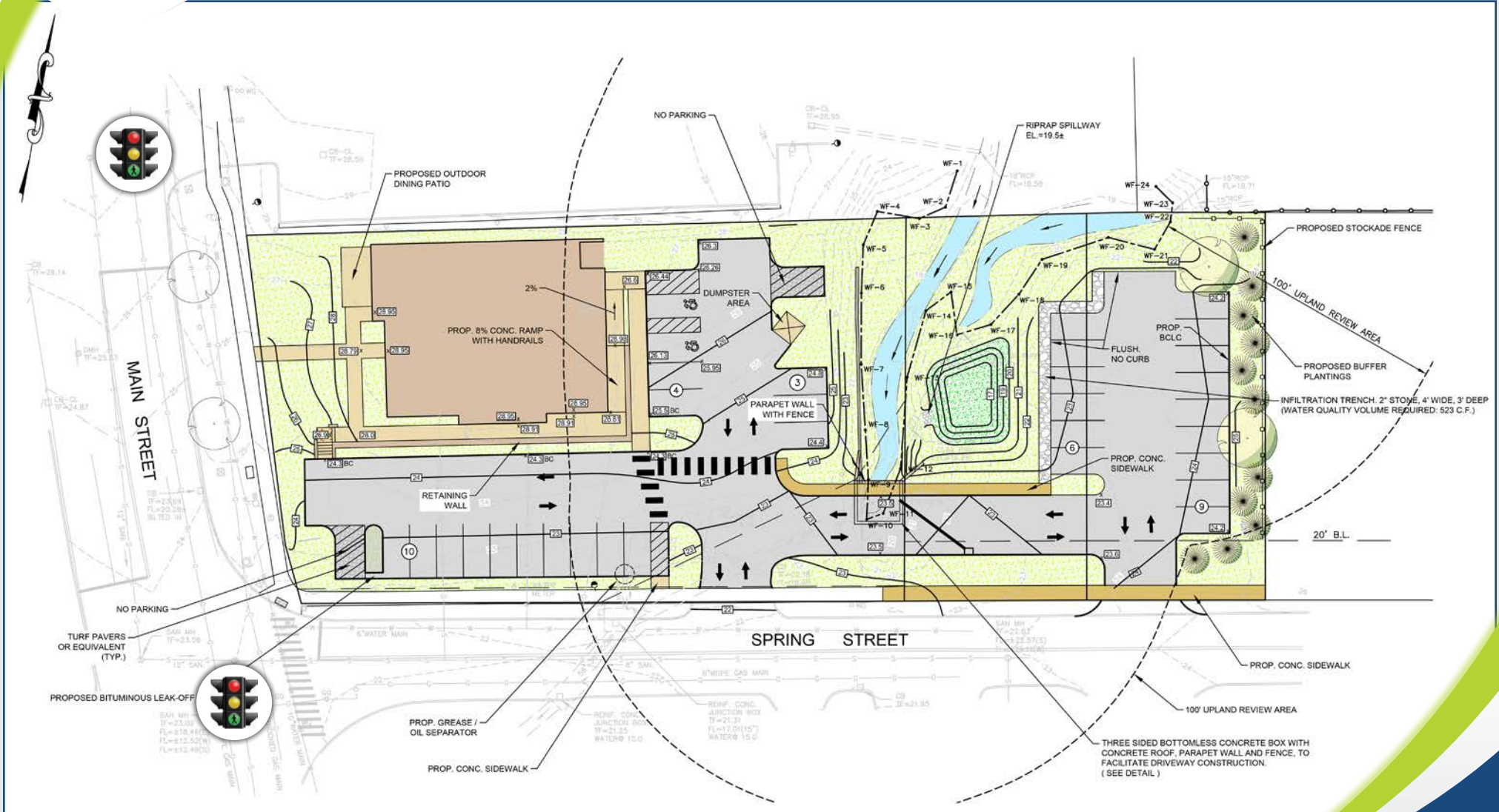
**A TRUE EXCLUSIVE...
CALL FOR THE DETAILS!**

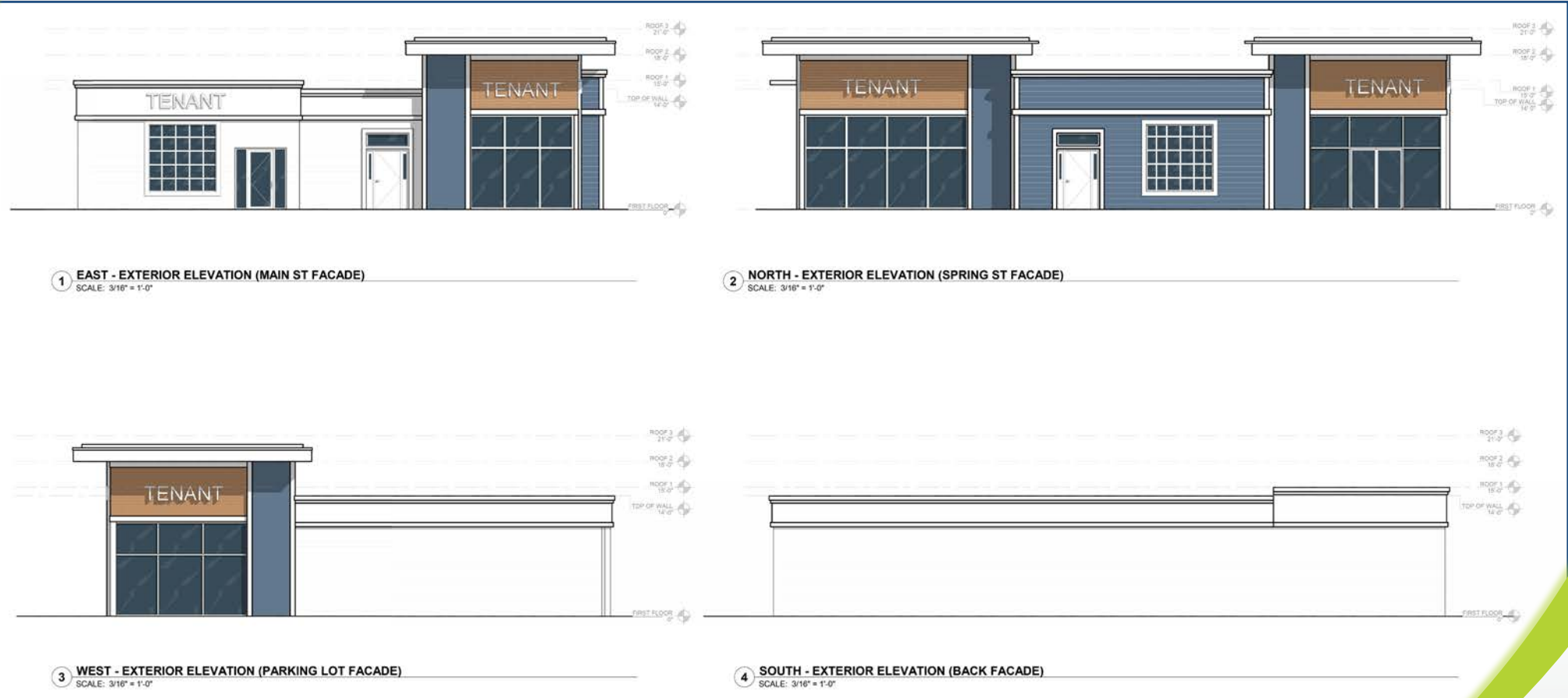
AGENT:

Tyler Lyman

203.529.4639 | tl@truecre.com
















SHOPS ON MAIN



















GLASTONBURY BLVD

SPRING STREET

MAIN STREET

SITE


















THE SHOPS AT SOMERSET SQUARE




























2800 MAIN STREET | GLASTONBURY, CT



3

2

SHOPS ON MAIN

STOP & SHOP
BARNES & NOBLE
j.gilberts

Garden Inn

HOMEWOOD SUITES

McDonald's

verizon

FIVE GUYS

Walgreens

Banfield PET HOSPITAL

Chick-fil-e

The Good Feet Store

PHYSICIAN24/7 URGENT CARE

Jersey Mike's

THE PUPPY PALACE

MOORE & WELBY'S

chili's

Bertucci's RESTAURANT

ups

ESLIE'S

T-Mobile

ANYTIME FITNESS

GLASTONBURY BLVD

MAIN STREET

SPRING STREET

SITE

EDGE FITNESS CLUB

DQ

THE SHOPS AT SOMERSET SQUARE

CHIPOTLE
Starbucks
MAX FISH
francesca's
CHICO'S
Talbots
bluemercury
JES A BANK

PeoplesBank

BREGGERS

DUNKIN'