



2800 MAIN STREET | GLASTONBURY, CT

DEMOGRAPHICS

POPULATION

1 mile: 5,111
3 miles: 44,776
5 miles: 180,994

HOUSEHOLDS

1 mile: 2,348
3 miles: 18,980
5 miles: 72,988

AVG. HOUSEHOLD \$

1 mile: \$123,411
3 miles: \$133,198
5 miles: \$108,183



FOR LEASE: 1,517 SF-4,517 SF

GREAT VISIBILITY FOR RESTAURANT, RETAIL, MEDICAL OR OFFICE!

- Located at a traffic light on the corner of Main Street and Spring Street.
- Plentiful parking with more parking proposed.

This information provided in this marketing package has been obtained from sources believed reliable, but has not been verified for accuracy or completeness. You should conduct a careful, independent investigation of the property and verify all information. Any reliance on this information is solely at your own risk.

**A TRUE EXCLUSIVE...
CALL FOR THE DETAILS!**

AGENT:

Tyler Lyman

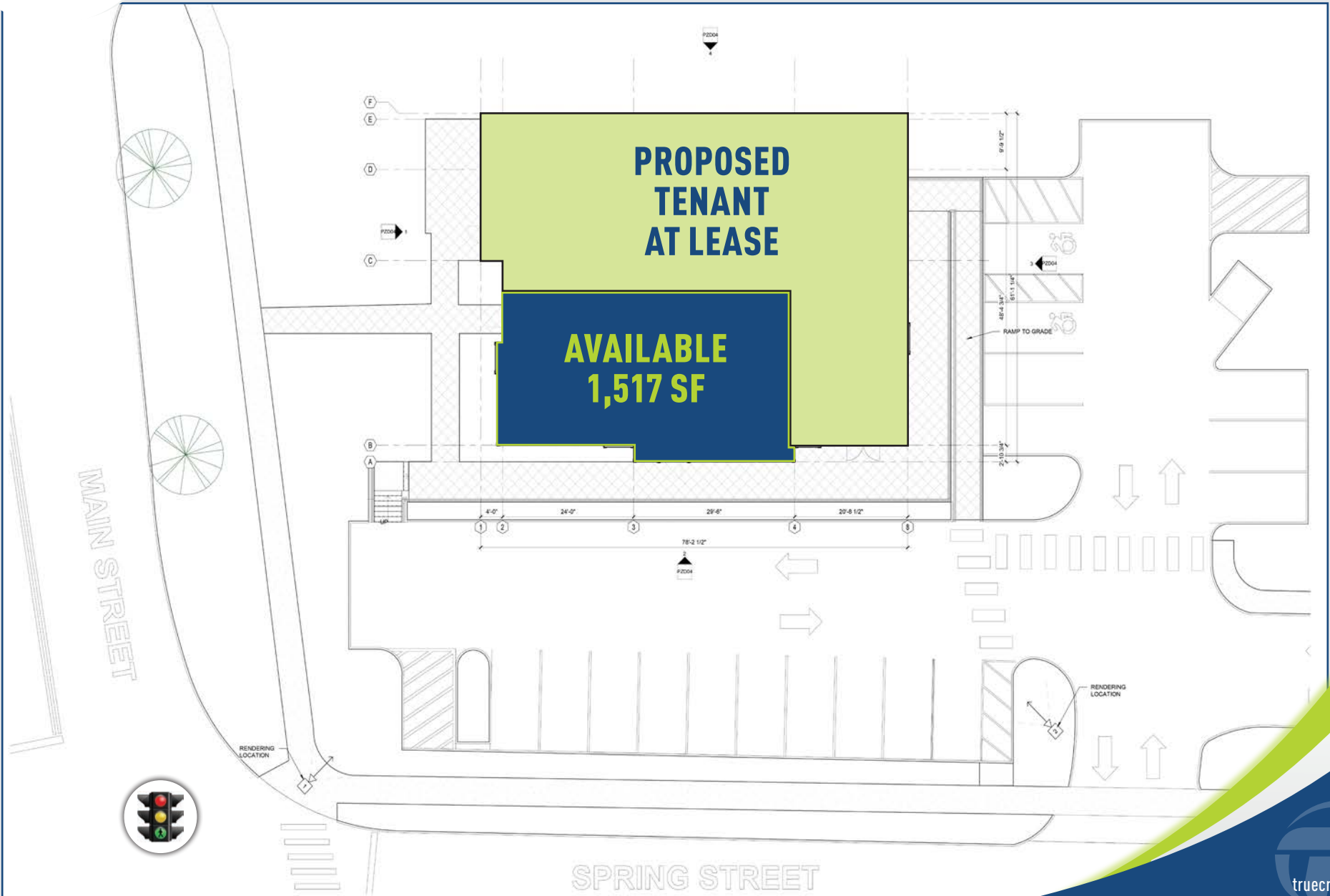
203.529.4639 | tl@truecre.com







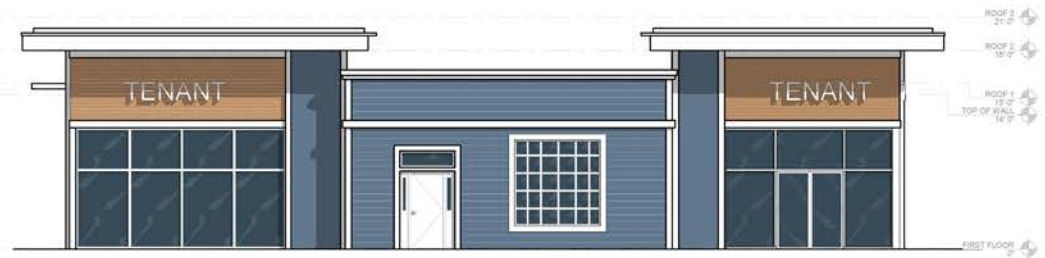
2800 MAIN STREET | GLASTONBURY, CT





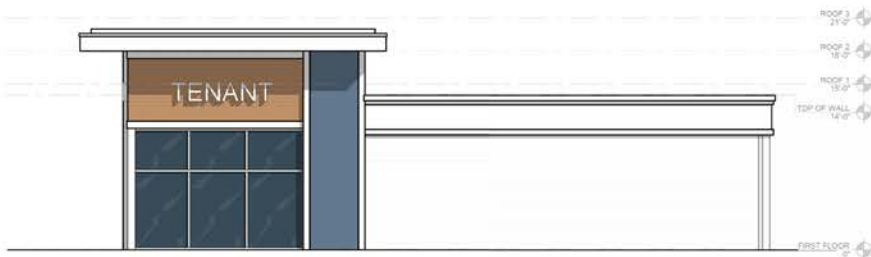
1 EAST - EXTERIOR ELEVATION (MAIN ST FACADE)

SCALE: 3/16" = 1'-0"



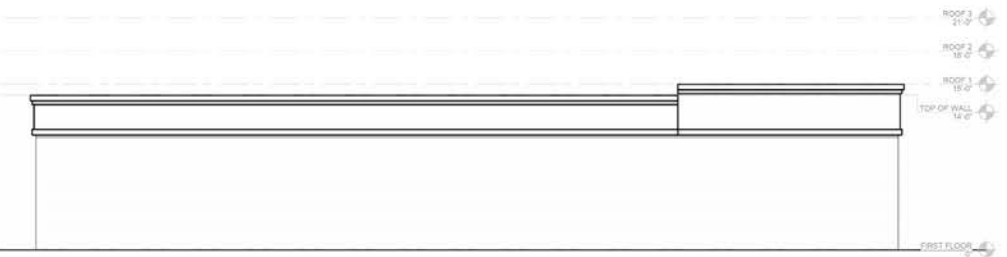
2 NORTH - EXTERIOR ELEVATION (SPRING ST FACADE)

SCALE: 3/16" = 1'-0"



3 WEST - EXTERIOR ELEVATION (PARKING LOT FACADE)

SCALE: 3/16" = 1'-0"

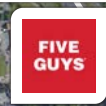
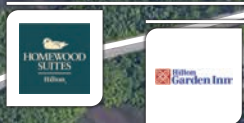


4 SOUTH - EXTERIOR ELEVATION (BACK FACADE)

SCALE: 3/16" = 1'-0"



2800 MAIN STREET | GLASTONBURY, CT



GLASTONBURY BLVD

SPRING STREET

MAIN STREET

SITE



THE SHOPS AT SOMERSET SQUARE



2800 MAIN STREET | GLASTONBURY, CT



3



BARNES & NOBLE



GLASTONBURY BLVD

THE SHOPS AT SOMERSET SQUARE



SPRING STREET

SITE



SHOPS ON MAIN



2