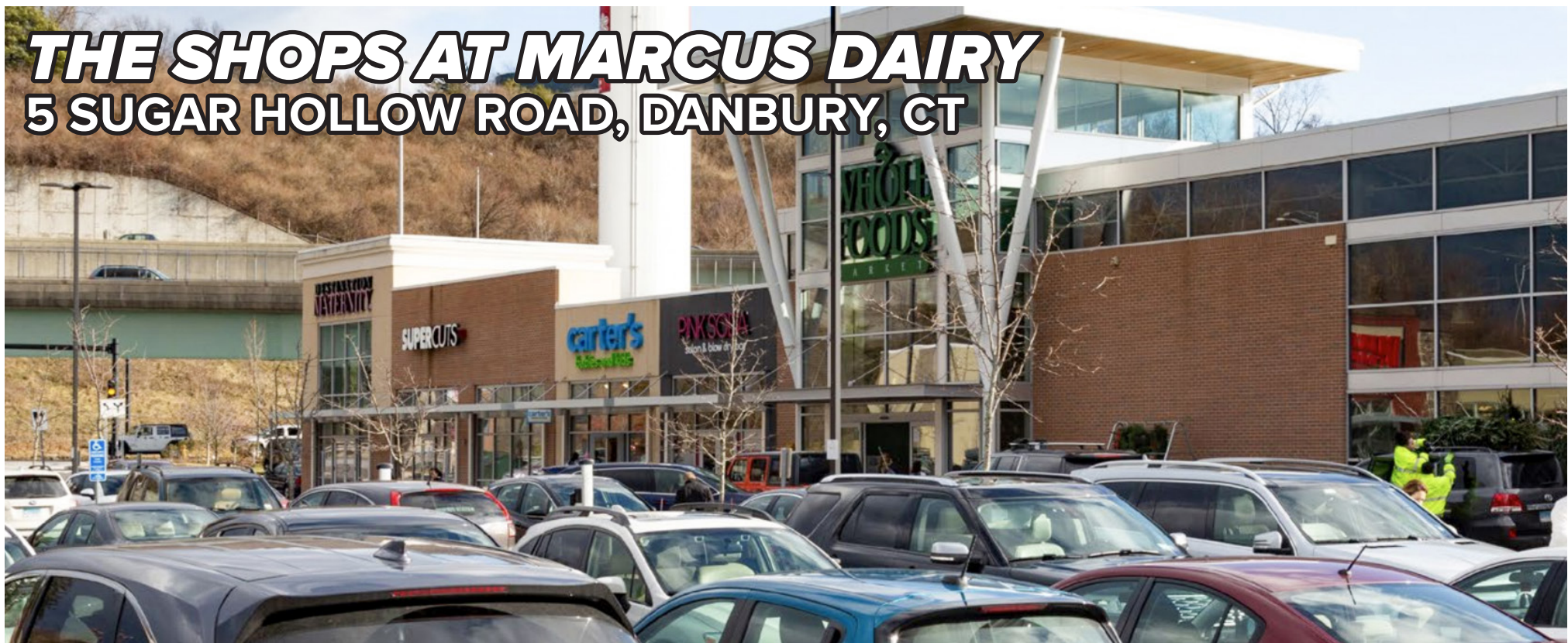


THE SHOPS AT MARCUS DAIRY

5 SUGAR HOLLOW ROAD, DANBURY, CT



FOR LEASE: 9,792 SF & 1,420 SF

DIVISIBLE

This is a high volume, Whole Foods anchored center directly across from the Danbury Fair Mall, and just minutes from I-84 and Rt. 7.

CO-TENANTS INCLUDE:

CAVA
(COMING SOON)

**WHOLE
FOODS**
MARKET

SUPERCUTS

carter's

Hawley Lane
SHOES

petco

Panera
BREAD

GoHealth
URGENT CARE

sleep & number

**AND
MANY
MORE!**

DEMOGRAPHICS

Primary Trade Area Population	227,041
Households	85,293
Avg. Household Income	\$172,928
Total Businesses	15,890
Total Employees	125,260

33,000+ VPD

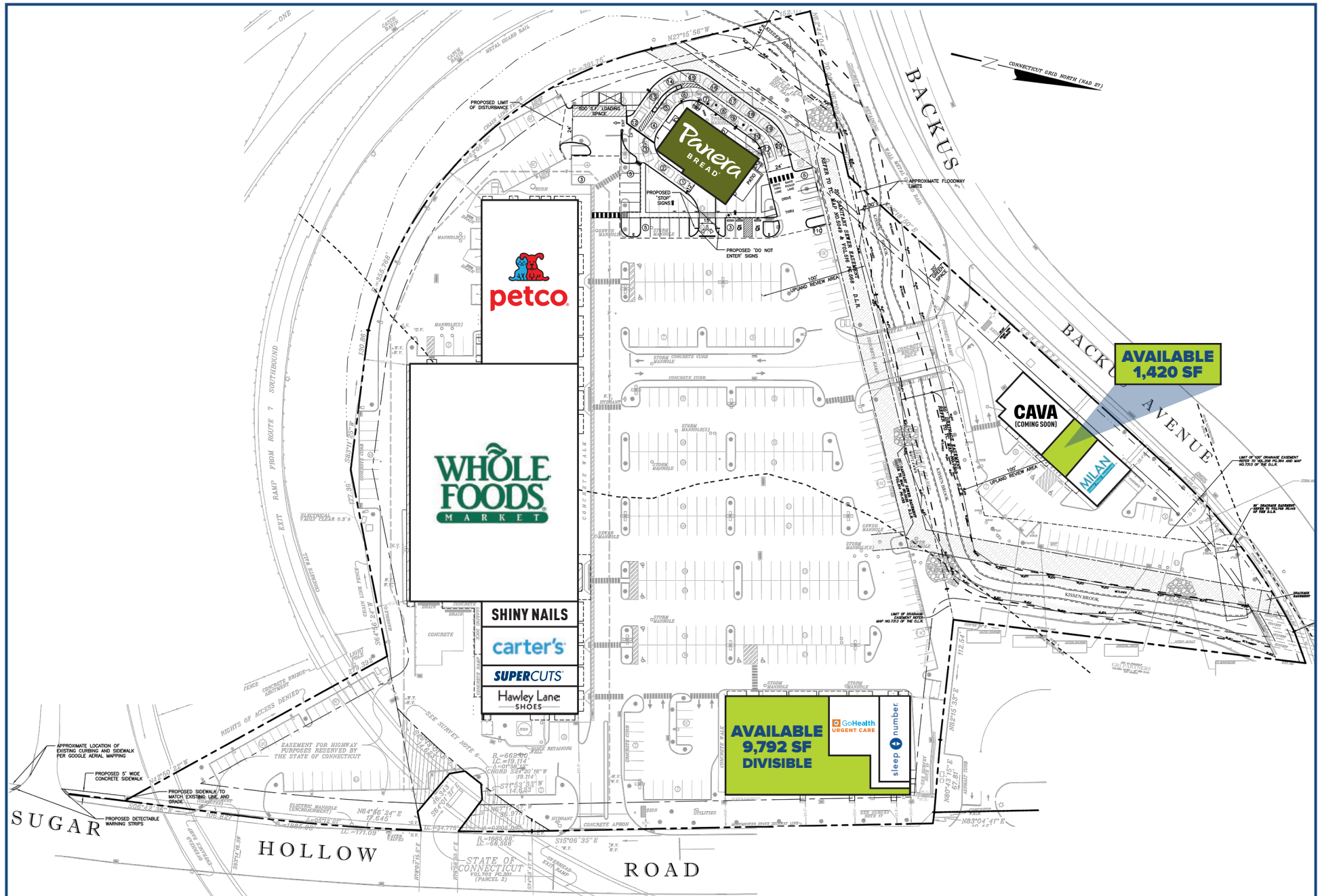
A TRUE EXCLUSIVE...
**CALL FOR THE
DETAILS!**

AGENT:
DOMINICK MUSILLI
203.529.4629
dm@truecre.com

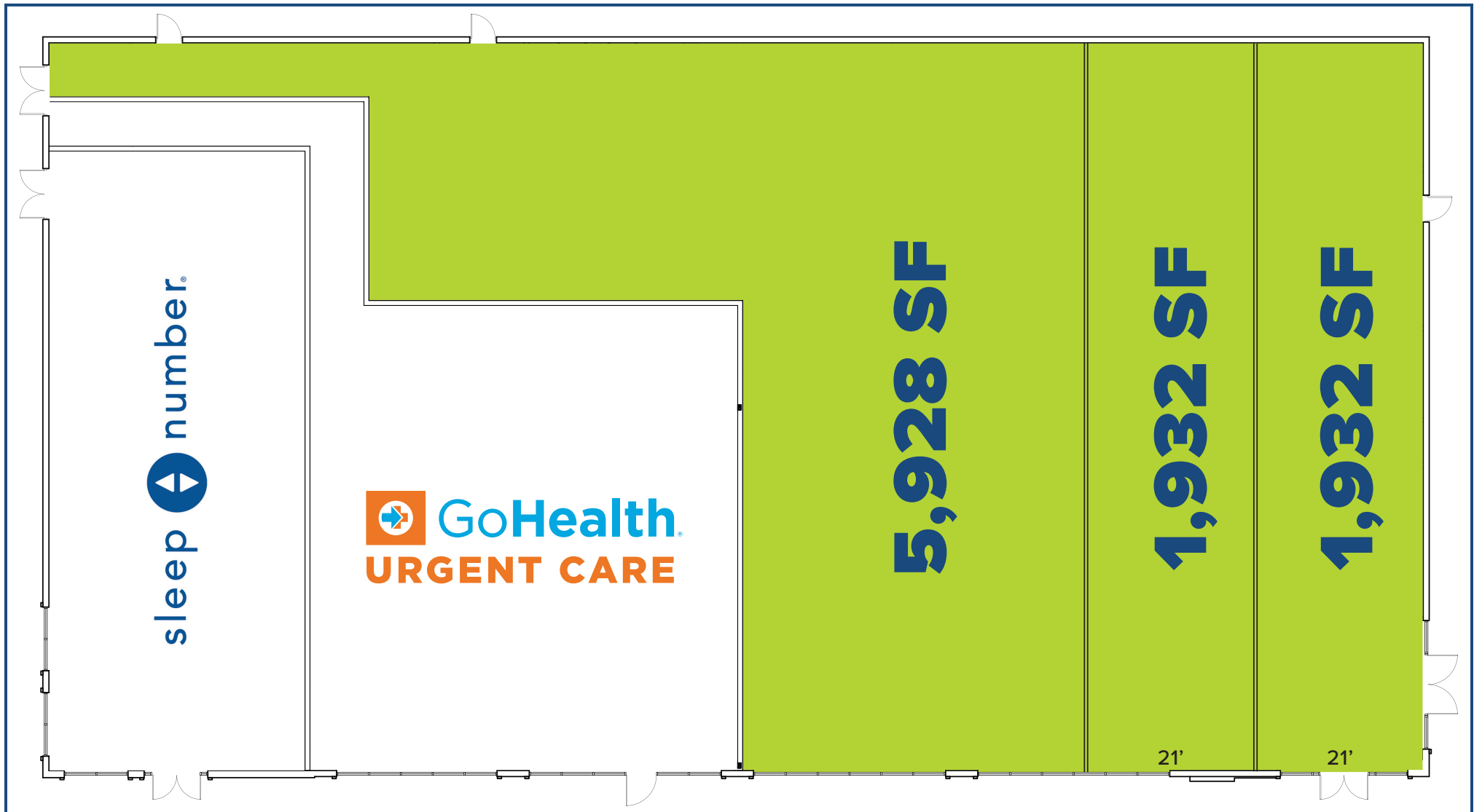
This information provided in this marketing package has been obtained from sources believed reliable, but has not been verified for accuracy or completeness. You should conduct a careful, independent investigation of the property and verify all information. Any reliance on this information is solely at your own risk.

TRUE
COMMERCIAL REAL ESTATE LLC

THE SHOPS AT MARCUS DAIRY
5 SUGAR HOLLOW ROAD, DANBURY, CT



PROPOSED SUBDIVISION OPTION A



PROPOSED SUBDIVISION OPTION B



THE SHOPS AT MARCUS DAIRY
5 SUGAR HOLLOW ROAD, DANBURY, CT



NUTMEG SQUARE



PLUMTREES PLAZA



COMMERCE PLAZA



DANBURY FAIR MALL



DANBURY SQUARE



BERKSHIRE SHOPPING CENTER

SHOPS AT MARCUS DAIRY

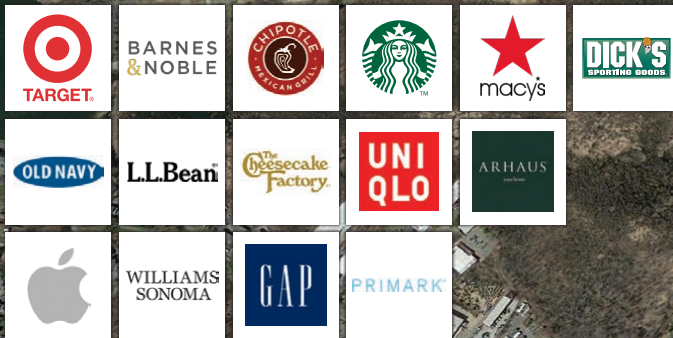


THE SHOPS AT MARCUS DAIRY
5 SUGAR HOLLOW ROAD, DANBURY, CT



81,500 VPD

DANBURY FAIR MALL



SHOPS AT MARCUS DAIRY



30,400 VPD

DANBURY SQUARE

